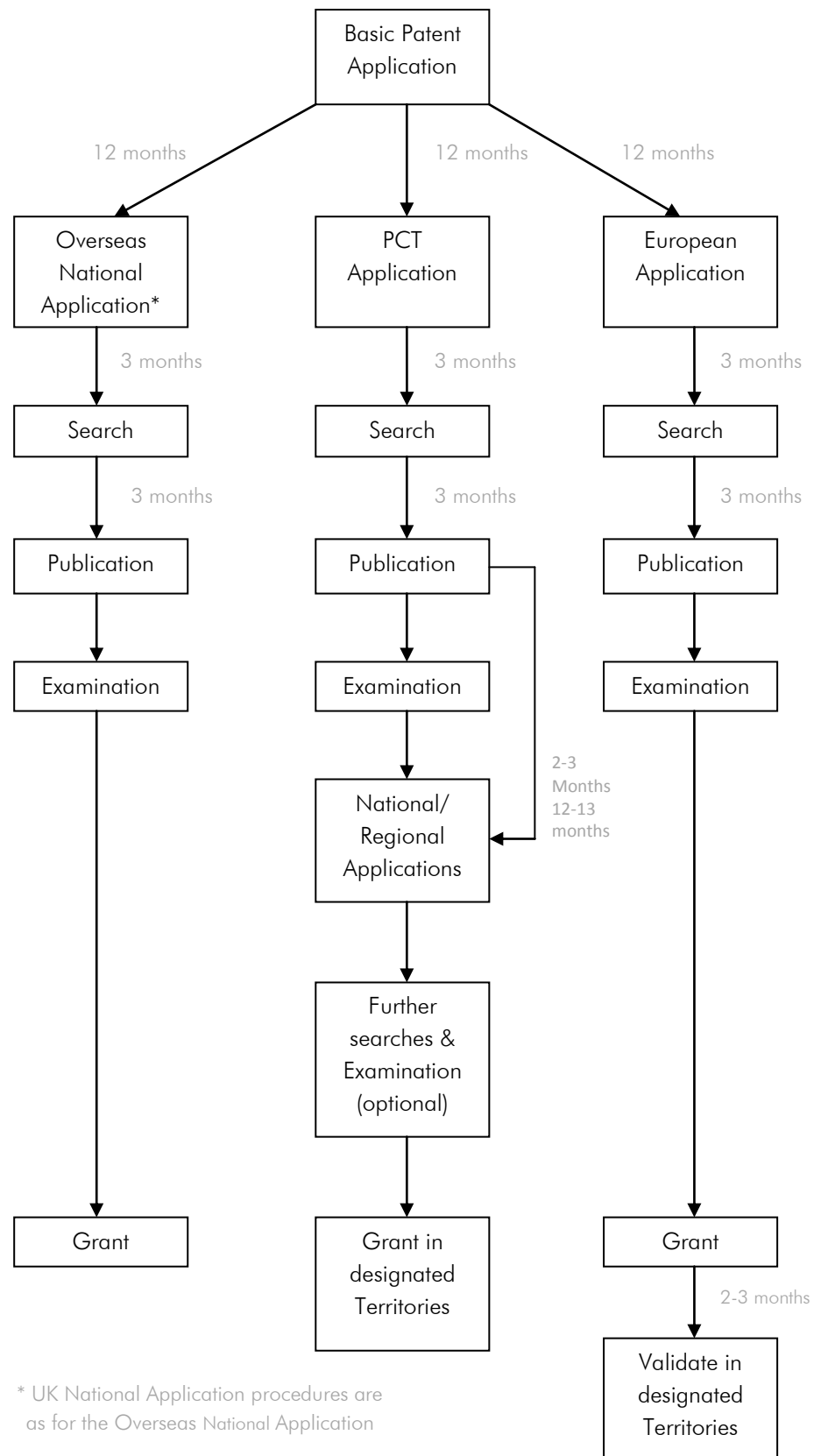


Basic Patent Application Process

- Overseas National Applications
- UK National Applications
- PCT Applications
- European Applications

The information provided in this section is a simplified summary of the application process and is not intended to be, nor should be used as, a substitute for Professional advice from a suitably qualified person.

Hill-IP Limited
 The Warrant House,
 High Street
 Altrincham, Cheshire,
 WA14 1PZ
 T: 0845 862 1429
 F: 0845 862 1606
 E: contact@hill-ip.com



* UK National Application procedures are as for the Overseas National Application